

WHISTLER GALILEO™
HANDHELD GPS

QUICK START-UP GUIDE



P/N 501030 © 2003 The Whistler Group, Inc.

INTRODUCTION

Dear Whistler Owner,
Thank you for purchasing the Whistler Galileo™ GPS. Please take time to read this guide, see our Frequently Asked Questions on GPS at www.whistlergroup.com, or call Customer Service at 800-531-0004, M-F 8am-5pm CT, for additional assistance with your Galileo.

Sincerely,
The Whistler Group

THE WHISTLER GROUP, INC.
13016 N. Walton Blvd.
Bentonville, AR 72712
TEL (479) 273-6012 Fax (479) 273-2927
www.whistlergroup.com

SET UP

**BATTERIES/
COMPACT FLASH (CF) CARD**

Remove the battery compartment cover, insert Compact Flash Card and insert 2 AA batteries. **Note:** The CF card is for detailed mapping only.

TURNING ON

Press for 2 seconds

VERTICAL/HORIZONTAL SCREEN

Press and hold

ADJUSTING CONTRAST

From Satellite Page,
move the to the left or right
Press when finished.

SET UP

BACKLIGHT

Press to turn on or off.
See "Setting" to change on time.

SET TIME

Go to Trip Page
Press Press
Move up to Hour
Press
Press to correct time
Press Move
to Press

SET UP

SETTING

Press
Select "Setting", press
to change backlight, navigation mode,
NMEA output, map direction and
units (miles vs. kilometers).

NAVIGATION

**CHANGE TO
SIMULATION MODE**

From Satellite Page, press
 to "Stop Navigation", Press

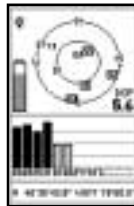
SELECT NAVIGATION MODE

From Satellite Page, press
 to "Navigation", Press

NAVIGATION

TO SET A WAYPOINT

From Map Page move
to a chosen location.
Press and hold
To use default name press
To rename, press to name field,
Press . up/down to field through
alphabet, left/right to next letter,
Press



SATELLITE PAGE

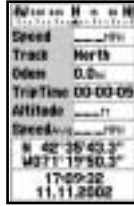
Displays satellites available, battery status, location coordinates, signal strength and backlight on/off.

NAVIGATION



MAP PAGE

Displays current position and coordinates with "Zoom In and Zoom Out" options.



TRIP PAGE

Displays information as you travel, such as compass heading, speed, track, odometer, trip time, altitude, speed, location, time and date.

NAVIGATION



COMPASS PAGE

Displays current direction, distance and time to next waypoint, route, and final destination. (picture shown displays route feature on.)



**TRACK LOG-ON
(BREAD CRUMBS)**

Leaves a trail behind to help you find your way back.